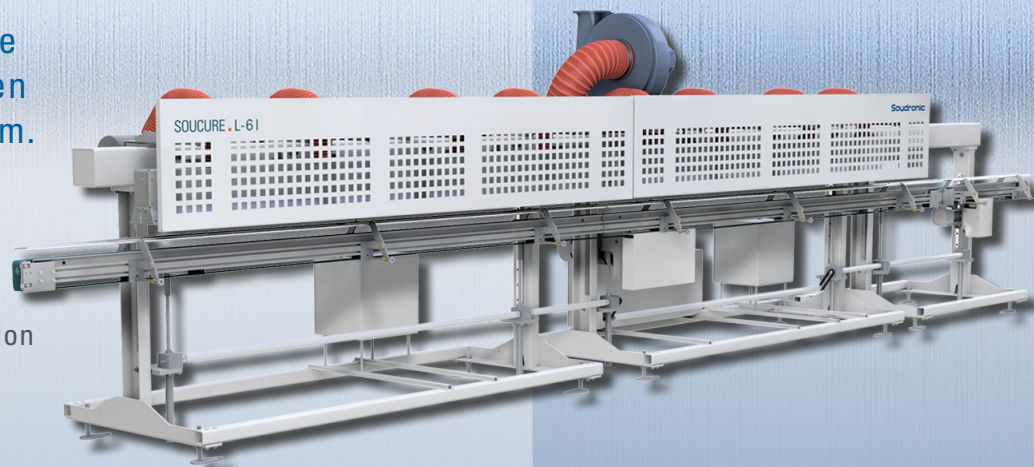




## SOUCURE I

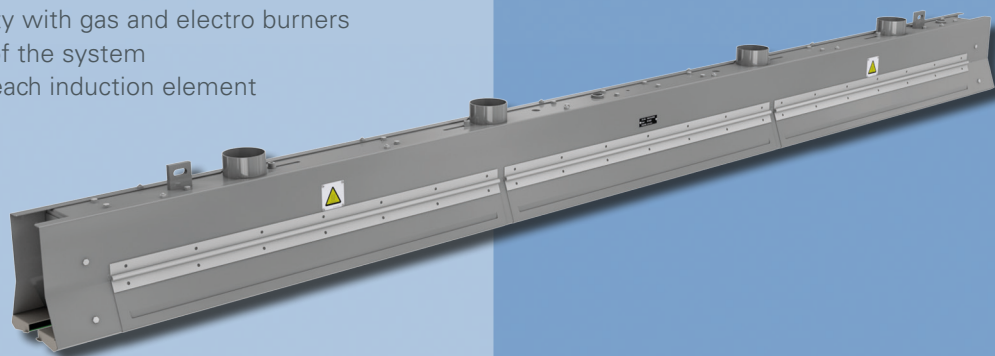
A new alternative to the well-proven gas curing system.

Soudronic induction curing system – a future-oriented solution for a successful can production.



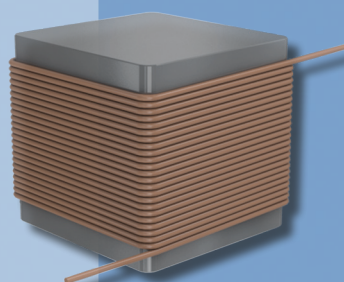
### Process reliability

- Broad tin flow
- High process reliability
- Homogenous heat distribution
- Temperature supervision at outlet of curing system
- Complete integration into the production system (UNICONTROL – or PLC control)
- Geometrical compatibility with gas and electro burners for an easy conversion of the system
- Individual regulation of each induction element



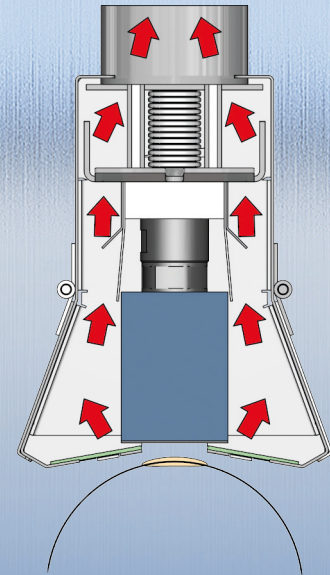
### Coil design

- Homogenous heat distribution owing to a unique coil technology (UNICOIL)
- Coil technology has been developed based on the finite element method
- Efficient and well focused energy transfer
- Minimization of heat dissipation
- No water cooling required
- High safety owing to complete coil insulation



### Suction process

- An aerodynamically optimized suction process on both sides of the inductors
- Safe and continued handling of lacquer condensate
- Cooling of inductor by the suction process
- Ergonomic design for easy access to all vital parts and thus simple cleaning



### Conveyor

- No pollution of conveying system by condensate owing to bottom transport of the cylinders
- No thermal stress thus high lifetime of transport belt
- No cooling of belt required

