



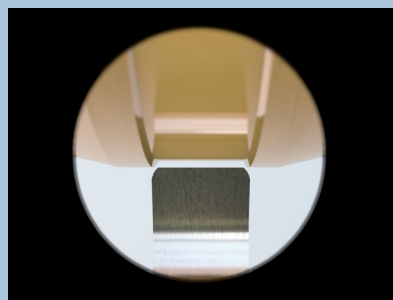
WELDING ROLLER DRESSING UNIT VS-30

Reliable, safe and clean: the welding roller dressing unit VS-30 leaves nothing to be desired.

A perfect roller head quality is the basis for a safe and efficient welding function. Therefore, it is a fundamental condition that the groove geometry is correct after remachining. Geometry errors can be neither compensated nor corrected by any machine parameter. Soudronic has gathered the experience and knowledge of practitioners and has created a new generation of welding roller dressing units.

The new VS-30 differs from the widely known VS-27 mainly in the following points:

- improved ergonomics and optimized handling
- use of a microscope instead of a magnifier to improve visual inspection of the process
- cover with interior lighting and additional light source for the microscope that allows working in every location regardless of the surrounding light

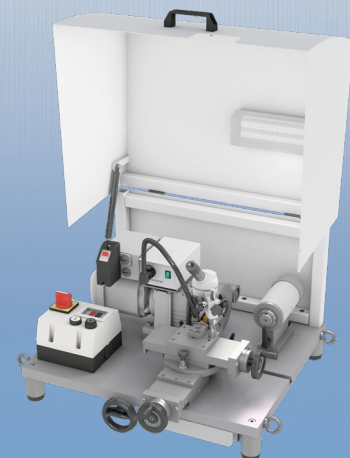


- adjustable spindle speed to optimize cutting speed and groove bottom quality
- integrated cover to help keep the VS-30 clean
- new precision cross-slide for more accurate and smaller diameter intervals

ADVANTAGES

Working with the new VS-30 is now safer and even more precise. The number of remachining cycles can be increased, and so can be the overall service life of the roller head. This results in substantial cost savings.

The new lighting concept allows free choice of working location.



SEE ALSO



[VS-30 – Grooving welding roller](#)

[VS-30 – Redressing welding roller](#)